



# ALASKA DIVISION OF HOMELAND SECURITY & EMERGENCY MANAGEMENT



## Daily Situation Report 26-041 • February 10, 2026

Toll-Free 1.800.478.2337

Anchorage Area 907.428.7000

SEOC 907.428.7100

<b><u>SEOC Preparedness Level</u></b>  Level 1-Routine Operations	<a href="http://ready.alaska.gov">http://ready.alaska.gov</a>	<b><u>Alaska Military Installation Force Protection Level:</u></b>  FPCON Bravo
<b><u>NTAS Bulletin</u></b> There are no current advisories <a href="https://www.dhs.gov/national-terrorism-advisory-system">https://www.dhs.gov/national- terrorism-advisory-system</a>	<b><u>Maritime Security (MARSEC)</u></b>  Level:1  Minimum Appropriate Security Measures	

(Significant changes from previous situation reports are red.)

### **Significant Issues:**

Yesterday, the SEOC participated in a weather brief with NWS that focused on the storm systems moving in throughout the week and stand ready to support communities and agencies if needed. \*See weather warnings below in Significant Weather Section.

### **2025 October West Coast Storm Disaster:**

- 108 households/340 individuals transitioned from non-congregate shelters (hotels) to longer-term housing (apartments)
- In Non-Congregate Shelter (hotels) Individuals: 348, Households: 68

### **Division of Homeland Security and Emergency Management Public Information:**

For current press releases, see: <https://ready.alaska.gov/PublicInformation/PressReleases>

### **Department of Health (DOH):**

For current information, see: <https://health.alaska.gov/en/>

### **Travel Alerts and Conditions:**

For current driving conditions, dial 511 or visit: <https://511.alaska.gov/>

### **Barry Arm Landslide / Tsunami Risk:**

The Barry Arm landslide currently shows no signs of large-scale active deformation but smaller-scale instabilities on the surface of the landslide still pose a threat of localized tsunami generation in Barry Arm. Mariners transiting near Barry Arm should remain vigilant.

For the latest information on the Barry Arm Landslide and Tsunami risk, click here:  
<https://dqgs.alaska.gov/hazards/barry-arm-landslide.html>

## **Earthquakes:**

United States Geological Service (USGS) Earthquake Information:

[Earthquake Hazards Program | U.S. Geological Survey](#)

National Tsunami Warning Center: <https://tsunami.gov/>

## **Alaska Volcanoes:**

Great Sitkin: Alert Level: Watch and Aviation Color Code: Orange

Shishaldin: Alert Level: Advisory and Aviation Color Code: Yellow

For Alaska Volcano updates, go to: <https://www.avo.alaska.edu/>

## **Air Quality Index (AQI) Advisories:**

### **Fairbanks Metro Area-**

**AIR QUALITY ALERT IN EFFECT FROM 5 PM THIS AFTERNOON TO 11 AM AKST TUESDAY**

For the most up-to-date Air Quality Index Advisories:

<https://dec.alaska.gov/Applications/Air/airtoolsweb/Advisories>

## **Spills of Oil and Hazardous Substances:**

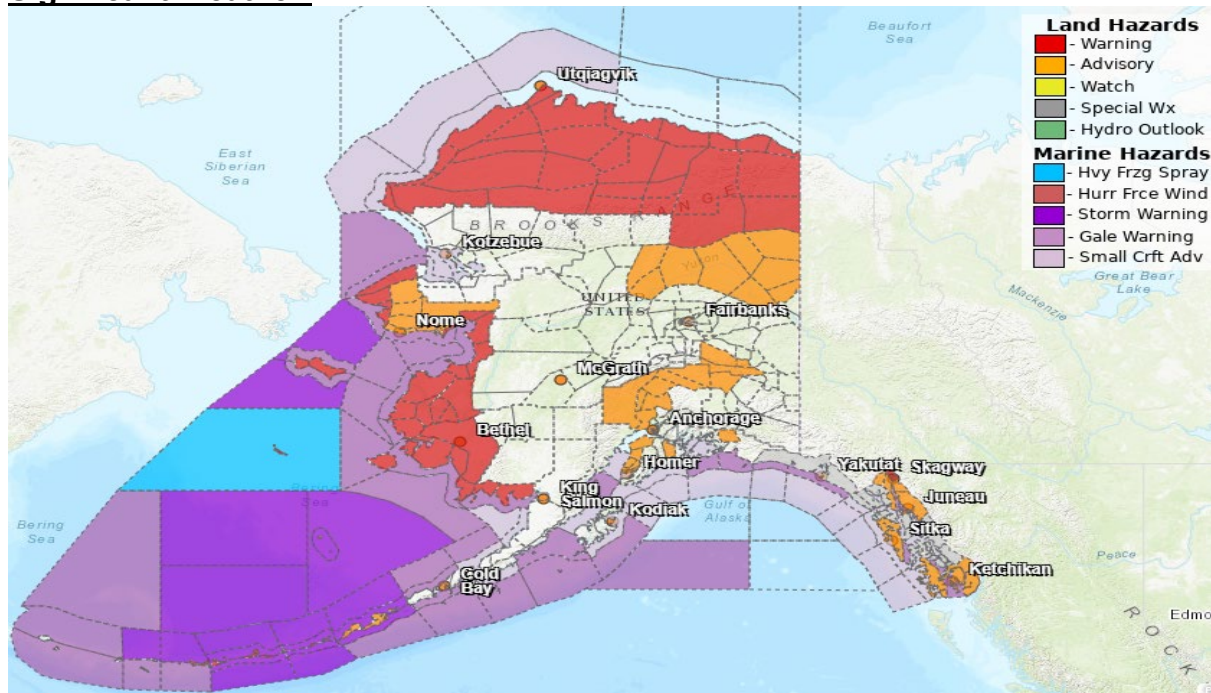
The Alaska Division of Environmental Conservation (ADEC) Spill Prevention and Response page is located at: <https://dec.alaska.gov/spar/ppr/spill-information/response/>

## **Alaska Cyber Security Information:**

State Employees may sign up for cybersecurity notifications and alerts at:

<https://oit-int.alaska.gov/security/>

## **Significant Weather:**



## **Winter Storm Warning in effect:**

- Western Capes; Northern Bristol Bay Coast, Interior Kuskokwim Delta- until 3am Wednesday.

## **Special Weather Statement in effect:**

- City and Borough of Yakutat; Municipality of Skagway; Haines Borough and Klukwan; Glacier Bay; Eastern Chichagof Island; Cape Fairweather to Lisianski Strait; City and Borough of Sitka; Admiralty Island; City and Borough of Juneau; Petersburg Borough; Western Kupreanof and Kuiu Island;

Prince of Wales Island; City and Borough of Wrangell; Ketchikan Gateway Borough; City of Hyder; Annette Island-A strong front and gale to storm force low to bring impactful weather Tuesday through Thursday.

**Blizzard Warning in effect:**

- Kuskokwim Delta Coast and Nunivak Island- until 3pm Wednesday.
- St Lawrence Island,
- Shishmaref; Bering Strait Coast- from 3am Tuesday to 3am Thursday.

**High Wind Warning in effect:**

- Central Aleutians- until noon today
- Municipality of Skagway, Eastern Norton Sound and Nulato Hills; Yukon Delta Coast; Lower Yukon River- from noon today through Wednesday.

**Extreme Cold Warning in effect:**

- South Slopes Of The Eastern Brooks Range-until 6am Wednesday.
- Western Arctic Coast; Northwest Arctic Coast; Northern Arctic Coast; Central Beaufort Sea Coast; Eastern Beaufort Sea Coast; Western Arctic Plains; Howard Pass and the Delong Mountains; Central Arctic Plains; Central Brooks Range; Romanzof Mountains-from 6am Tuesday to 6am Thursday.

**Winter Weather Advisory in effect:**

- Pribilof Islands- until 9pm this evening.
- Municipality of Skagway, Dalton Highway Summits-3pm this afternoon to noon Wednesday.
- Northern Copper Valley, Western Susitna Valley; Southern Susitna Valley; Central Susitna Valley; Northern Susitna Valley, Eastern Alaska Range South of Trims Camp- from 9am today through Wednesday.
- Turnagain Pass, Thompson Pass- from 11 am today through Wednesday.
- SW Kenai Peninsula; NW Kenai Peninsula, Southern Seward Peninsula Coast; Interior Seward Peninsula- through Wednesday.

**Wind Advisory in effect:**

- Prince of Wales Island, City and Borough of Sitka, Ketchikan Gateway Borough; Annette Island, Haines Borough and Klukwan, City and Borough of Juneau, Municipality of Skagway - this evening until Wednesday am.
- Eastern Aleutians- until 9pm this evening.

**Cold Weather Advisory in effect:**

- Yukon Flats- until 6am Wednesday.

For more information, go to <https://www.weather.gov/arh>

**Avalanche Conditions:**



**Hatcher Pass** – Low below 2500'; Moderate above 2,500'

**Turnagain Pass and Girdwood** – Considerable above 2500' Moderate 1000' – 2500' Low below treeline.

**Summit Lake** – Considerable above 2500' Moderate 1000' – 2500' Low below treeline.  
**Seward and Lost Lake** – Considerable above 2500' Moderate above 1,000' Low below treeline.  
**Maritime** - Considerable at all elevations.  
**Intermountain** - Considerable at all elevations.  
**Continental** – Considerable at all elevations.

.

For more information and the most current avalanche conditions, go to <https://alaskasnow.org>

**The Next Situation Report** will be on **February 11, 2026**. A significant change in situation or threat level will prompt an interim report. This report is posted on the internet at <https://ready.alaska.gov/sitrep>.

To register for email distribution, go to: <http://list.state.ak.us/mailman/listinfo/dhsem.situation.report>.  
Direct questions regarding this report to the SEOC at 907-428-7100 or [seoc@alaska.gov](mailto:seoc@alaska.gov)